

Pumps



227

PUMPS

For versatile use, easy handling, compact:
BOLA pumps are made to meet almost all requirements
in practice and allow safe transfer of liquids.

PRODUCT TIPS



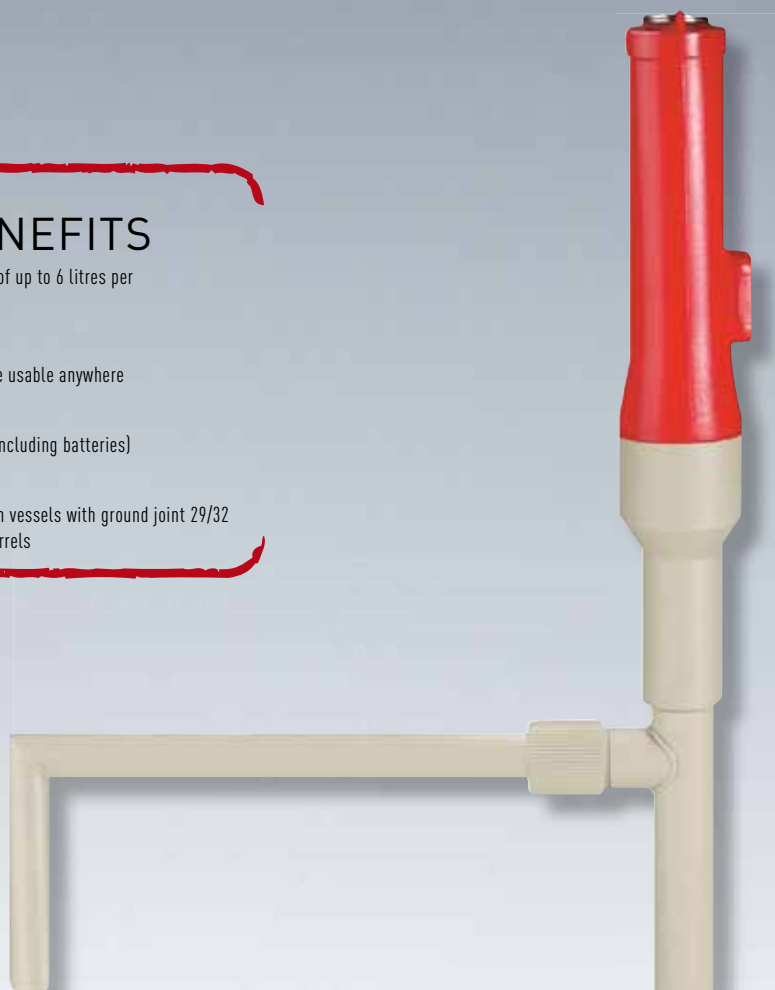
Page 229:
Sampling Pump



Page 228:
Battery-operated Pump

BOLA BENEFITS

- » powerful – pumping capacity of up to 6 litres per minute free flowing
- » compact construction
- » battery operated and therefore usable anywhere
- » easy handling
- » very light weight (only 500 g including batteries)
- » low-risk pumping
- » also suitable for narrow mouth vessels with ground joint 29/32 or thread GL 45, carboys or barrels



BOLA Cordless Pumps for Acids and Caustic Solutions

BESTSELLER

Material: PP Temperature resistance: from +5°C to +60°C Chemical resistance: ++ very good

Product description:

Made of polypropylene, PTFE, Hastelloy®, driven by two commercial 1,5 V batteries (we recommend the use of rechargeable batteries)

FDA conform

Length of suction pipe mm	Dia. of suction pipe mm	Cat. No.:
400	25	G 870-01
600	25	G 870-11

Applications:

For pumping low viscous liquids (e.g. acids, bases etc.)

« »
Special Request?
+49 (0) 93 46-92 86-0



For ground joint 29/32



For thread GL 45



BOLA BENEFITS

- » compact construction
- » usable anywhere (no power or air supply needed)
- » easy handling
- » quick and low-risk pumping of ultrapure liquids
- » volume per stroke 50 ml
- » for tubing O.D. 6 mm, PTFE tubing (length 2 m) included in delivery

BESTSELLER

BOLA Sampling Pump

Material: PTFE Material: PP Temperature resistance: from -10°C to +90°C Chemical resistance: ++ very good

Product description:

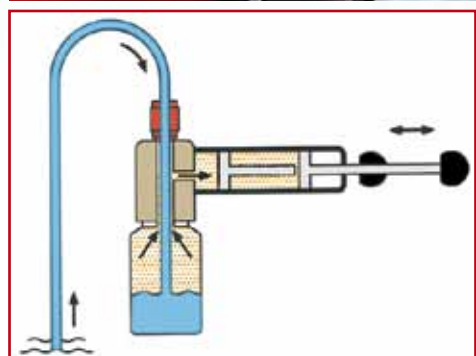
Made of polypropylene and PTFE. A pull on the ball handle produces a slight vacuum in the sampling bottle. Due to this vacuum, the sample is sucked into the sampling bottle. Both glass bottles and plastic bottles with a GL 45 thread can be used as sampling bottles. The pump provides universal chemical resistance since the sample is only exposed to PTFE.

FDA conform

Thread for connection GL	For bottles with a capacity of ml	suction lift of water max. m	Cat. No.:
18	100 - 2.000	4,5	A 124-16

Applications:

For pumping liquids from sources that are not easily accessible; also suitable for liquids with a high viscosity, e.g. oils



SUITABLE: page 132
Tubing for all screw joints

BOLA Micro Magnet for Glass Pumps

Material: PTFE Temperature resistance: from +0°C to +150°C Chemical resistance: +++ universal Pressure: 1 bar

Product description:

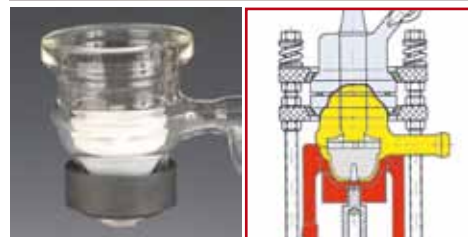
Made of PTFE, the magnet can be adjusted in height by means of the integrated screw. The strong magnet provides good power transmission.

FDA conform

Suitable for DN	Bore dia. mm	O.D. mm	Height mm	Cat. No.:
50	6	36	29	G 876-14

Applications:

Suitable for all common laboratory glass pumps, e.g. from company NORMAG®



We build your pump!

Besides the pumps shown on these pages we also construct and produce custom-made pumps. Those pumps are used in a multitude of appliances and plants.



Membrane pump with PTFE bellow piston, compressed-air drive.



Metering unit with inspection glass, sensor mount and compressed-air driven PTFE bellow piston.